

PART OF S. E. 1/4 OF SEC. 8, T. 6 N., R. 1 W., S. L. B. & M.  
ACADEMY HEIGHTS ANNEX ADDITION

TAXING UNIT 25

IN OGDEN CITY  
SCALE 1"=50'

PREFIX 11-041

UTAH STATE BOARD FOR  
VOCATIONAL EDUCATION

0001

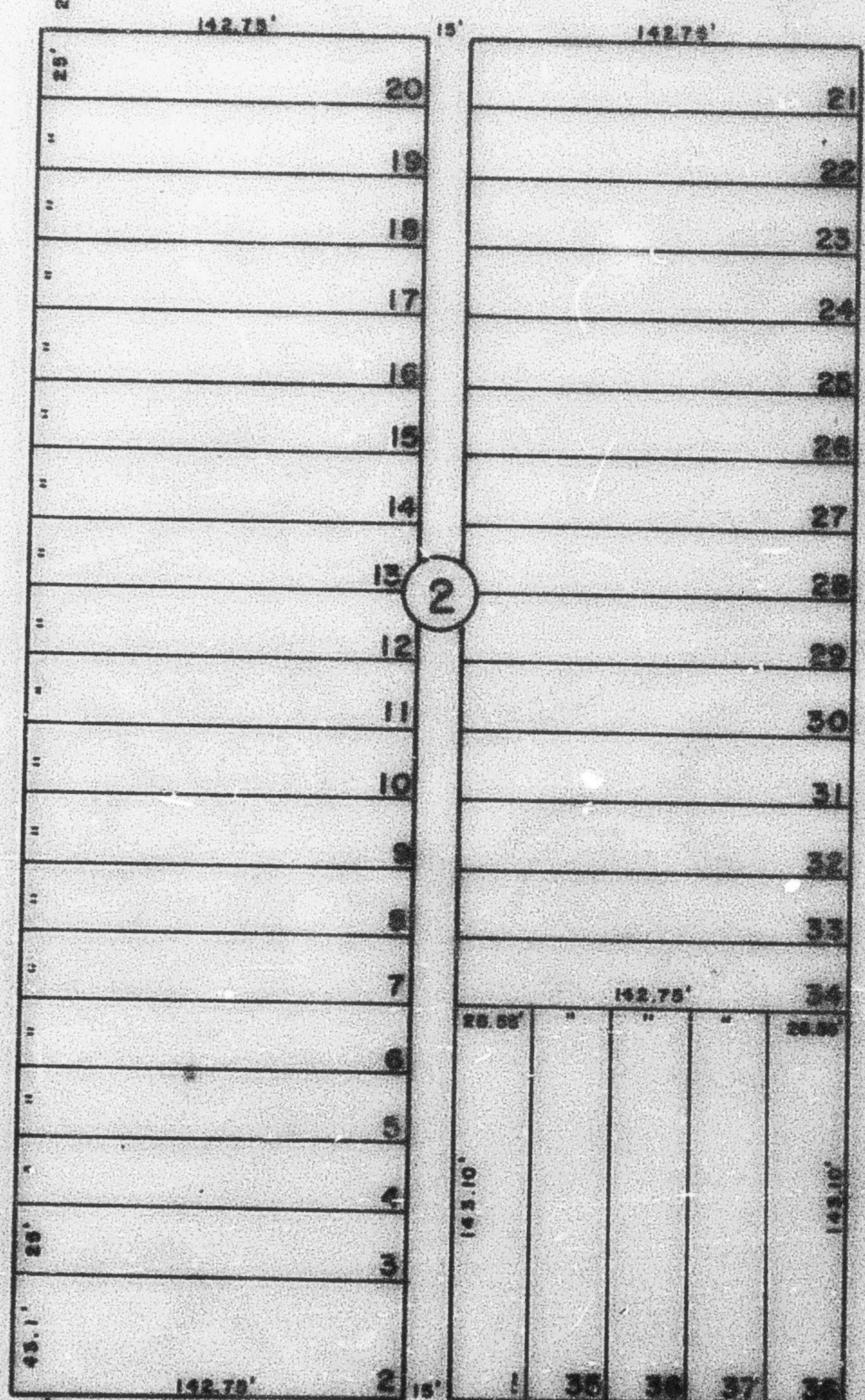
SEE PAGE 40

557'

BLVD.

WASHINGTON

SEE  
PAGE  
40



AVENUE

OGDEN

AVENUE

ADAMS

SEE P.  
81

SEE  
P.  
81

AVC \*

\*LANE

SEE BOOK 12 PAGE 57

\* SEE NAME CHANGE  
BOOK 1425, PAGE 2184  
1477 1227